



EcoStruxure Secure Connect Advisor

# EcoStruxure™ Secure Connect Advisor

Secure remote access solution



# Harmony

## Discover [Harmony](#)

Advanced operator interface and industrial relays

Harmony operator interface and industrial relays enhance operational efficiency and equipment availability across industrial and building applications. **Harmony** includes intelligent connected products and edge terminals that visualize, gather and process data, enabling informed operator decisions

## Explore our offer

- [Harmony Push Buttons and Switches](#)
- [Harmony HMI Operator Terminals, IPC and EdgeBox](#)
- [Harmony Signaling Devices](#)
- [Harmony Electrical Relays](#)
- [Harmony Safety](#)

Life Is On

**Schneider**  
Electric



# General contents

## EcoStruxure™ Secure Connect Advisor

■ <b>Presentation</b> .....	<a href="#">page 2</a>
■ <b>Benefits</b> .....	<a href="#">page 2</a>
□ Efficient and easy to use .....	<a href="#">page 2</a>
□ Easy to subscribe .....	<a href="#">page 2</a>
□ Easy to scale, whenever you need.....	<a href="#">page 3</a>
□ Works everywhere, for everyone .....	<a href="#">page 3</a>
□ Reliable and safe .....	<a href="#">page 3</a>
□ License options for usage flexibility.....	<a href="#">page 3</a>
■ <b>Architecture</b> .....	<a href="#">page 3</a>
■ <b>EcoStruxure Secure Connect Advisor compatibility</b> .....	<a href="#">page 4</a>
■ <b>References</b> .....	<a href="#">page 4</a>
■ <b>Product reference index</b> .....	<a href="#">page 6</a>

# EcoStruxure™ Secure Connect Advisor

## Secure remote access solution



EcoStruxure Secure Connect Advisor

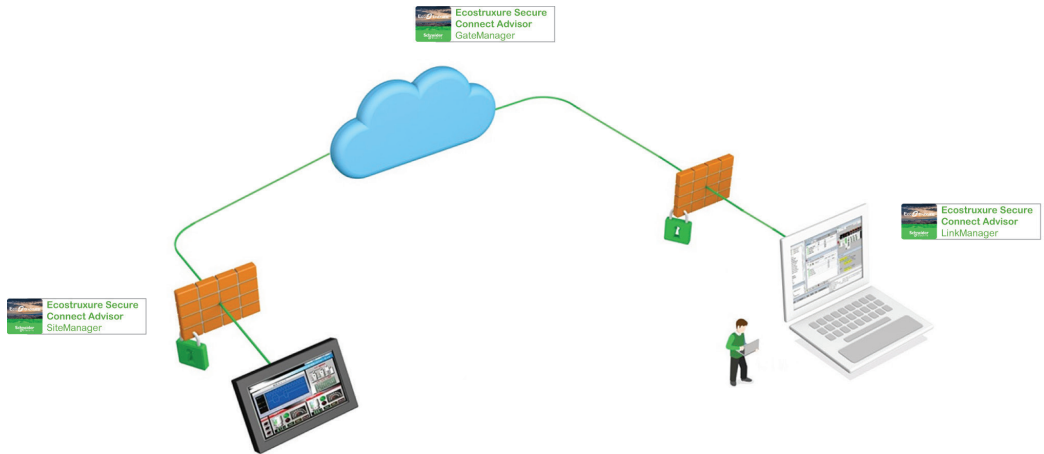
### Presentation

EcoStruxure Secure Connect Advisor provides a secure connection between remote display units on the work site (via SiteManager Embedded) and computers or smart devices in the office (via LinkManager) over a secure central server (GateManager).

With EcoStruxure Secure Connect Advisor, technicians and programmers can remotely access the Schneider Electric software and securely update it via the HMI, PLC, and other connected devices just as though they were present on site. Troubleshooting and repair can also be performed remotely upon request. EcoStruxure Secure Connect Advisor LinkManager client for remote access runs on any 32-bit or 64-bit version of Microsoft Windows Vista, Windows 7, Windows 8.x, or Windows 10 operating system. This software adapts to a number of applications such as:

- > Food & Beverage
- > Mining, Minerals & Metals
- > Oil and Gas
- > Water and Wastewater, etc.

EcoStruxure Secure Connect Advisor SiteManager software is either pre-embedded (in Harmony HMI) or manually installable on compatible Schneider Electric HMI models.

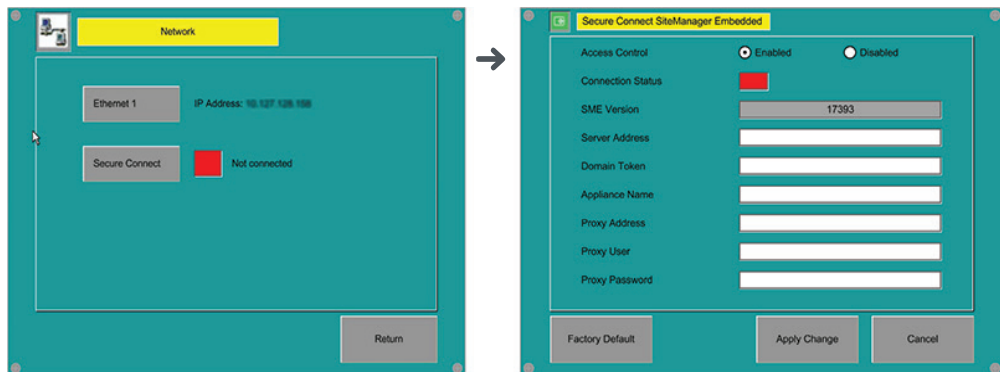


EcoStruxure Seure Connect Advisor concept

### Benefits

#### Efficient and easy to use

- > Embedded and ready to use in Harmony HMI offers (panels and industrial PC)



Configuration screen

- > Gain remote access to programming, diagnostics, control, and monitoring
- > Speed up machine operation and reduce machine downtime

#### Easy to subscribe

- > Purchase just one annual subscription
- > Choose the "remote service pack" adapted to your needs and, in less than half an hour, you can connect to a remote machine

# EcoStruxure™ Secure Connect Advisor

## Secure remote access solution

### Easy to scale, whenever you need

- > Increase the number of LinkManager users or LinkManager mobile users
- > Increase access to more HMI units with site manager embedded
- > Program more devices

### Works everywhere, for everyone

- > Operable for all applications and segments
- > Available from desktop or smartphone

### Reliable and safe

- > Cybersecure (end to end) for both OEMs and end users, and certified by **Protectem** for cybersecurity
- > Secure access to remote devices over the internet
- > Compliant with industry level standards for security, including IEC 62443-3-3

### License options for usage flexibility

- > Advanced settings on GateManager secure server
- > Various user statistics available
- > Extended licenses to program more devices (PLC, drives, etc.) connected to the HMI

## Architecture

The EcoStruxure Secure Connect Advisor solution comprises three components:

- **GateManager:** The GateManager server operates as a central point for the LinkManager and SiteManager. Both the SiteManager and the LinkManager must be registered with the GateManager before access is provided to the SiteManager network. This creates an encrypted connection between the SiteManager and LinkManager remote computer.

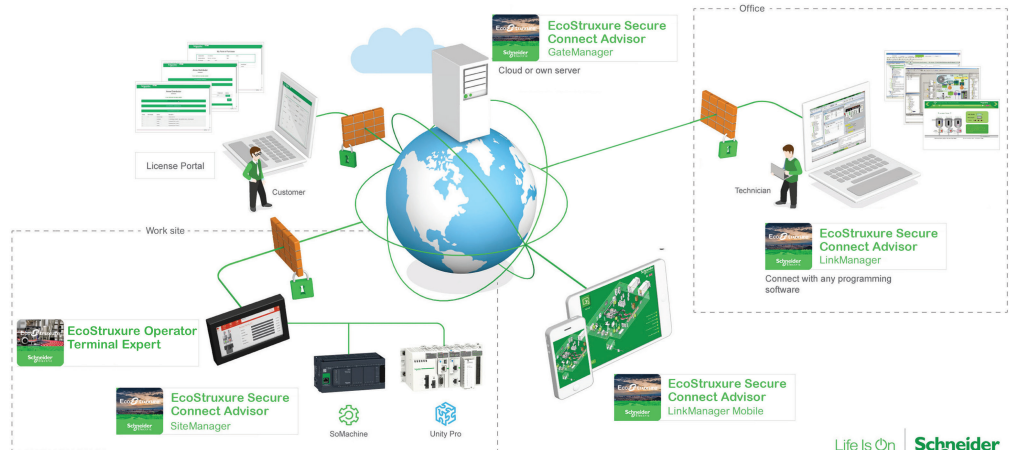
- **SiteManager Embedded (1):** The SiteManager is the embedded component in the existing HMI configuration software. It is the device-monitoring front end for multiple industrial devices in a remote location and enables uninterrupted secure access via GateManager.

It can be purchased in two license formats:

- Basic, for accessing 1 display unit and registering up to 2 agents per display unit
- Extended, for accessing external IP devices (PLCs, iPCs, server, Web camera, etc.) on the same network as the display unit and registering five or more agents per display unit

- **LinkManager/LinkManager Mobile:** The LinkManager is the client on the remote operator's computer. After installation, the user will be able to securely login to the GateManager and remotely connect to the devices represented by the agents on the SiteManager, including the HMI and its connected devices.

LinkManager Mobile is a lightweight version that can be used for Web-enabled devices such as smartphones or tablets to connect to SiteManager.



EcoStruxure Secure Connect Advisor for remote programming access to HMI and its connected devices

(1) The setup method for SiteManager Embedded differs depending on the display unit. For more information, please refer to the EcoStruxure Secure Connect Advisor User Guide available on our website [www.schneider-electric.com](http://www.schneider-electric.com).

### EcoStruxure Secure Connect Advisor compatibility

The following Harmony HMIs are compatible with EcoStruxure Secure Connect Advisor (including SiteManager Embedded):

- Harmony S-Panel iPC (Performance and Optimized)
- Harmony Box iPC (Modular Universal/Performance, S-Box Universal)
- Harmony GTU panels
- Harmony GTO panels (1)

### References

EcoStruxure Secure Connect Advisor is available with the following HMI configuration software:

- Vjeo Designer
- EcoStruxure Operator Terminal Expert

For more information on supported software versions, please refer to the EcoStruxure Secure Connect Advisor User Guide or product data sheet available on our website [www.schneider-electric.com](http://www.schneider-electric.com).

### EcoStruxure Secure Connect Advisor digital licenses

Description	License type	Compatible panels	Reference
<b>EcoStruxure Secure Connect Advisor 30-day Free Trial</b>	30-day trial version (free)	Harmony GTU Harmony GTO (1) Harmony iPCs	<a href="#">VJOCNTFREE30</a>
<b>EcoStruxure Secure Connect Advisor Secure Remote Access Digital License - Essential Pack</b>	1x EcoStruxure Secure Connect Advisor GateManager 1x EcoStruxure Secure Connect Advisor SiteManager Embedded EXTENDED license (5 device agents) 1x EcoStruxure Secure Connect Advisor LinkManager 1x EcoStruxure Secure Connect Advisor LinkManager Mobile		<a href="#">VJOCNTPACKES</a>
<b>EcoStruxure Secure Connect Advisor Secure Remote Access Digital License - Enterprise Pack</b>	1x EcoStruxure Secure Connect Advisor GateManager 20x EcoStruxure Secure Connect Advisor SiteManager Embedded EXTENDED license (5 device agents) 1x EcoStruxure Secure Connect Advisor LinkManager 1x EcoStruxure Secure Connect Advisor LinkManager Mobile 1x EcoStruxure Secure Connect Advisor GateManager Premium Access		<a href="#">VJOCNTPACKENT</a>

(1) Except for HMIGTO1300 and HMIGTO2300.

## References

The following add-on references may be added to any EcoStruxure Secure Connect Advisor Pack to extend functionality:

EcoStruxure Secure Connect Advisor digital licenses				
Description	License type	Compatible panels	Reference	
EcoStruxure Secure Connect Advisor LinkManager License	LinkManager	Harmony GTU Harmony GTO (1) Harmony iPCs	VJOCNTLML	
EcoStruxure Secure Connect Advisor LinkManager Mobile License	LinkManager Mobile		VJOCNTLMM	
EcoStruxure Secure Connect Advisor SiteManager Embedded BASIC licenses	SiteManager Embedded BASIC		VJOCNTSMBASIC	
EcoStruxure Secure Connect Advisor SiteManager Embedded EXTENDED license, 5 device agents	SiteManager Embedded EXTENDED		VJOCNTSMEXT5	
1x EcoStruxure Secure Connect Advisor SiteManager Embedded EXTENDED license, 10 device agents	SiteManager Embedded EXTENDED		VJOCNTSMEXT10	
EcoStruxure Secure Connect Advisor GateManager Premium Access	GateManager Premium Access		VJOCNTGMPREM	
EcoStruxure Secure Connect Advisor User Statistics Activation			VJOCNTSTAT	
EcoStruxure Secure Connect Advisor Termination of pack			VJOCNTTERM	
EcoStruxure Secure Connect Advisor User Statistics Termination			VJOCNTENDSTAT	

(1) Except for HMIGTO1300 and HMIGTO2300.



---

V	
VJOCNTENDSTAT	5
VJOCNTFREE30	4
VJOCNTGMPREM	5
VJOCNTLML	5
VJOCNTLMM	5
VJOCNTPACKENT	4
VJOCNTPACKESS	4
VJOCNTSMBASIC	5
VJOCNTSMEXT5	5
VJOCNTSMEXT10	5
VJOCNTSTAT	5
VJOCNTTERM	5

Life Is On



Learn more about our products at  
[www.schneider-electric.com/ecostruxure-secure-  
connect-advisor](http://www.schneider-electric.com/ecostruxure-secure-connect-advisor)

The information provided in this documentation contains general descriptions and/or technical characteristics of the performance of the products contained herein. This documentation is not intended as a substitute for and is not to be used for determining suitability or reliability of these products for specific user applications. It is the duty of any such user or integrator to perform the appropriate and complete risk analysis, evaluation and testing of the products with respect to the relevant specific application or use thereof. Neither Schneider Electric nor any of its affiliates or subsidiaries shall be responsible or liable for misuse of the information contained herein.

Design: Schneider Electric  
Photos: Schneider Electric

**Schneider Electric Industries SAS**

Head Office  
35, rue Joseph Monier - CS 30323  
F-92500 Rueil-Malmaison Cedex  
France

DIA5ED2190101EN  
June 2020 - V2.0